



Rightly Understanding the Rich Young Ruler



Perspective

*The way we choose to look
at things can be as significant
as the thing we are trying to see.*

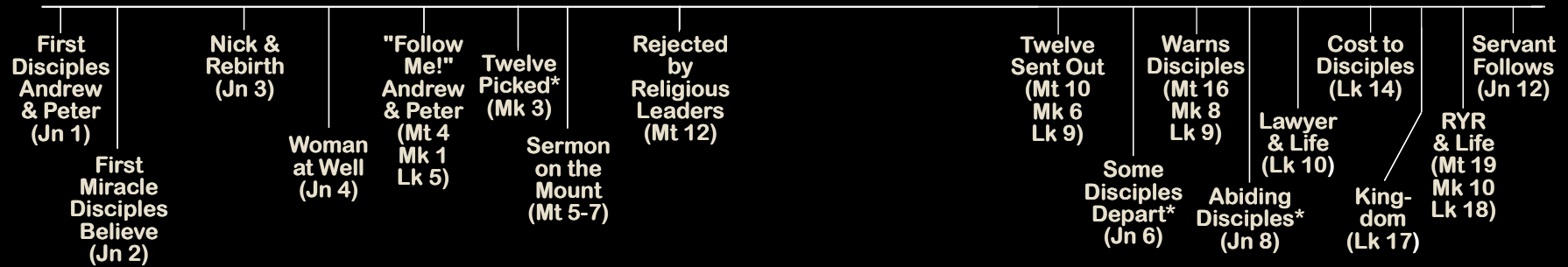
William R. Thurston
President
GenRad, Inc.

Historical Context



Timeline

Early Ministry (12 Mon.)	Galilean Ministry			Later Ministry	
	1st Tour (5 Mon.)	2nd Tour (12 Mon.)	3rd Tour (6 Mon.)	Judea (3 Mon.)	Perea (3 Mon.)



*Distinction in Disciples

D I S C I P L E S

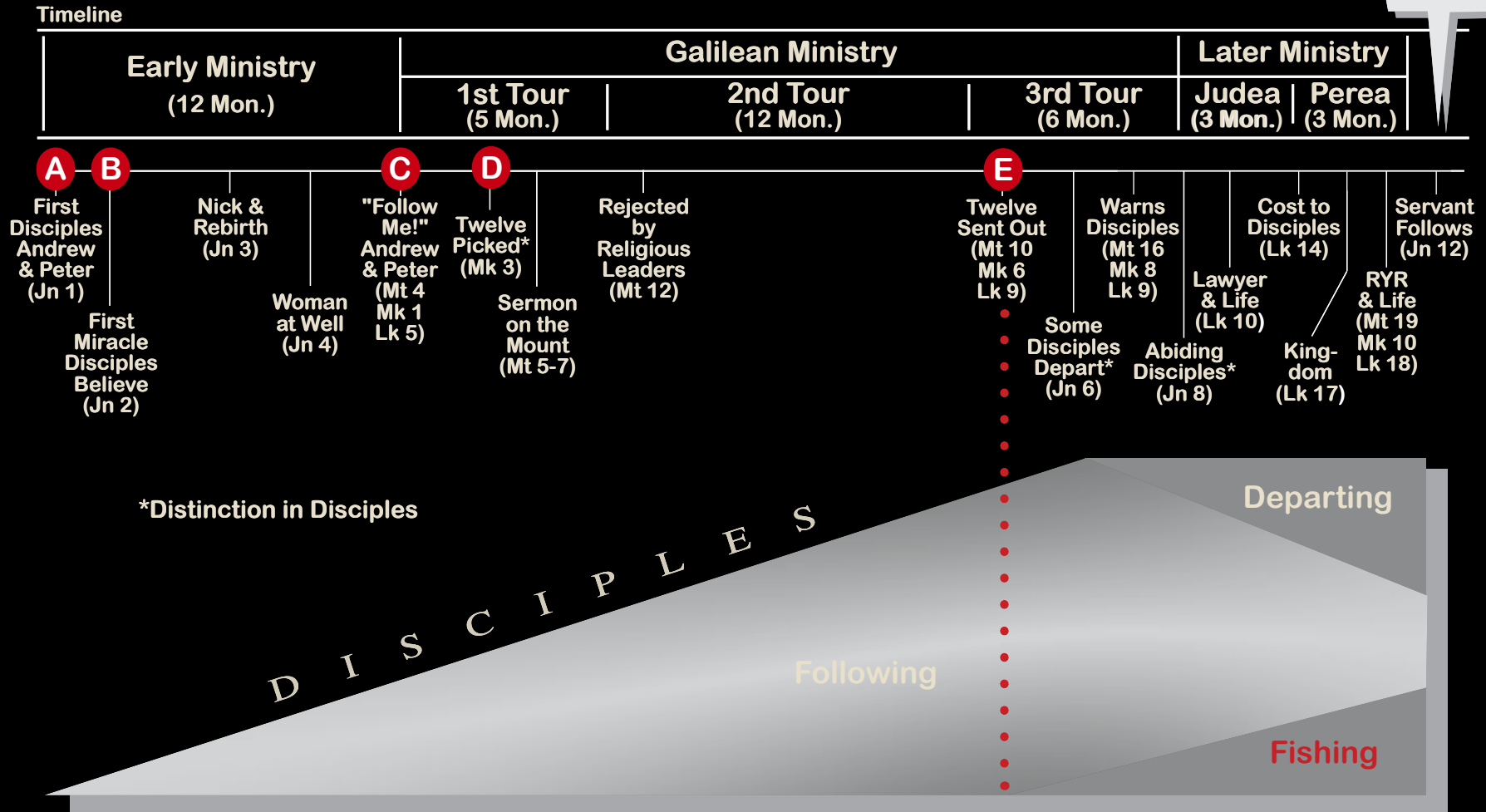
Following

Departing

Fishing

Adapted from: *A Harmony of the Gospels for Students of the Life of Christ*
 A.T. Robertson/Harper & Row

Historical Context



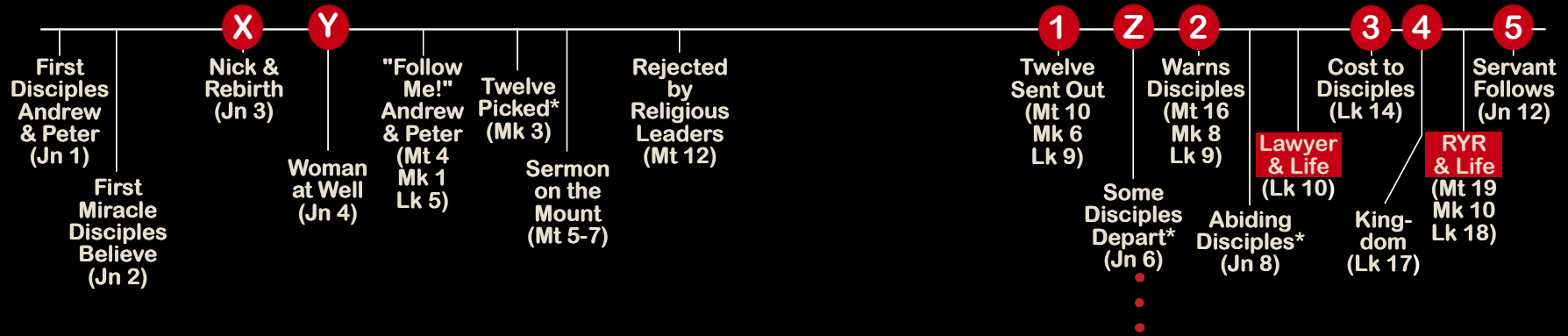
Adapted from: *A Harmony of the Gospels for Students of the Life of Christ*
A.T. Robertson/Harper & Row

Historical Context



Timeline

Early Ministry (12 Mon.)	Galilean Ministry			Later Ministry	
	1st Tour (5 Mon.)	2nd Tour (12 Mon.)	3rd Tour (6 Mon.)	Judea (3 Mon.)	Perea (3 Mon.)



*Distinction in Disciples

D I S C I P L E S

Following

Departing

Fishing

Adapted from: *A Harmony of the Gospels for Students of the Life of Christ*
A.T. Robertson/Harper & Row



Historical Context



Timeline

Early Ministry (12 Mon.)	Galilean Ministry			Later Ministry	
	1st Tour (5 Mon.)	2nd Tour (12 Mon.)	3rd Tour (6 Mon.)	Judea (3 Mon.)	Perea (3 Mon.)



Adapted from: *A Harmony of the Gospels for Students of the Life of Christ*
A.T. Robertson/Harper & Row

Historical Context



Adapted from: *A Harmony of the Gospels for Students of the Life of Christ*
A.T. Robertson/Harper & Row

Historical Context



Timeline

Early Ministry (12 Mon.)	Galilean Ministry			Later Ministry	
	1st Tour (5 Mon.)	2nd Tour (12 Mon.)	3rd Tour (6 Mon.)	Judea (3 Mon.)	Perea (3 Mon.)

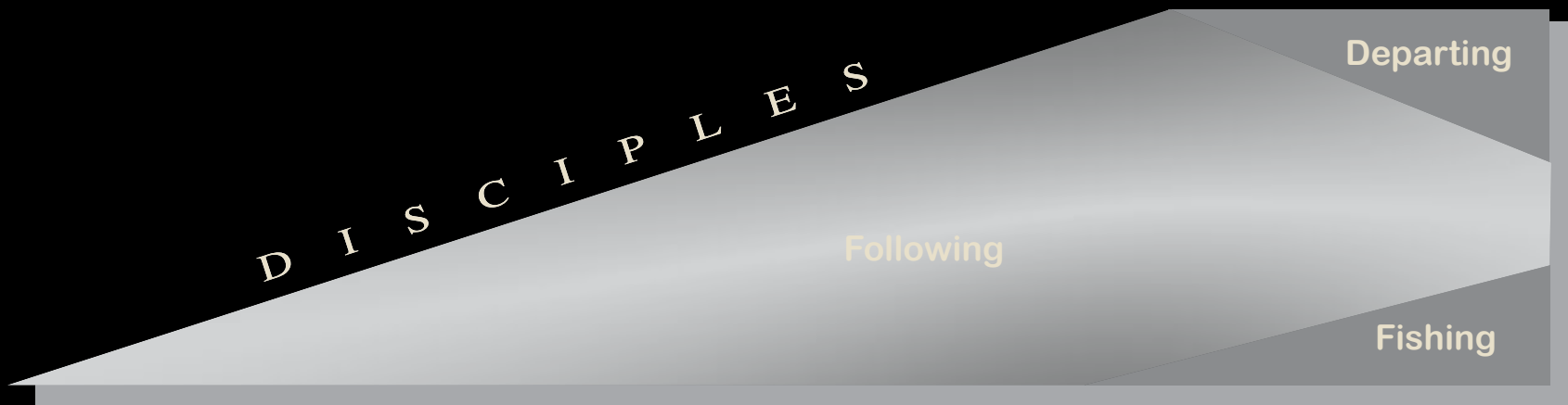


LAW **RYR**

“Follow Me”



To Die is To Live



Historical Context



Timeline

Early Ministry (12 Mon.)	Galilean Ministry			Later Ministry	
	1st Tour (5 Mon.)	2nd Tour (12 Mon.)	3rd Tour (6 Mon.)	Judea (3 Mon.)	Perea (3 Mon.)



LAW **RYR**

“Follow Me”	✓		✓	✓	✓	✓	✓	✓
To Die is To Live			✓	✓	✓	✓	✓	✓
Greatest in Kingdom					✓		✓	✓



Interpretative Puzzle



Content Development

CHILDREN (Kingdom) Lk. 18:15-17

- Kingdom belongs to such as these
- Kingdom to be received like a Child
- Kingdom to be entered into

RICH RULER (What Do To?) Lk. 18:18-23

Inherit Eternal Life

Questions/Answers

- Good (Character of God)
- Law (Requirements of God)

Condition/Response

Lack One Thing...
[Go], sell, give;
come, follow Me

♦

Went away grieving

DISCIPLES (Who Enters?) Lk. 18:24-25

Statement

Hard for wealthy to enter the kingdom

Question/Answer

Who can be saved?

♦

Possible only with God

PETER (What for Us?) Lk. 18:26-30

Question/Answer

Left everything and followed You

♦

Will Receive:

- Much present age &
- Age to come, eternal life

V
A
R
I
A
N
T

Obtain Eternal Life
(Mt. 19:16)

If you wish to enter into life, keep the commandments.
(Mt. 19:17)

V
A
R
I
A
N
T

What then will there be for us?
(Mt. 19:27)

Will receive many times as much, and will inherit eternal life.
(Mt. 19:29)

Content Development

CHILDREN
(Kingdom)
Lk. 18:15-17

- Kingdom belongs to such as these
- Kingdom to be received like a child
- Kingdom to be entered into

RICH RULER
(What Do To?)
LK. 18:18-23

Inherit Eternal Life

Questions/Answers

- Good (Character of God)
- Law (Requirements of God)

Condition/Response

Lack One Thing...
[Go], sell, give;
come, follow Me

Went away grieving

DISCIPLES
(Who Enters?)
Lk. 18:24-25

Statement

Hard for wealthy to enter the kingdom

Question/Answer

Who can be saved?
Possible only with God

PETER
(What for Us?)
LK. 18:26-30

Question/Answer

Left everything and followed You

Will Receive:

- Much present age & Age to come, eternal life

V
A
R
I
A
N
T

Obtain Eternal Life
(Mt. 19:16)

If you wish to enter into life, keep the commandments.
(Mt. 19:17)

V
A
R
I
A
N
T

What then will there be for us?
(Mt. 19:27)

Will receive many times as much, and will inherit eternal life. (Mt. 19:29)



Content Development

CHILDREN
(Kingdom)
Lk. 18:15-17

- Kingdom belongs to such as these
- Kingdom to be received like a child
- Kingdom to be entered into

RICH RULER
(What Do To?)
Lk. 18:18-23

Inherit Eternal Life

Questions/Answers

- Good (Character of God)
- Law (Requirements of God)

Condition/Response

Lack One Thing...
[Go], sell, give;
come, follow Me
♦
Went away grieving

DISCIPLES
(Who Enters?)
Lk. 18:24-25

Statement

Hard for wealthy to enter the kingdom

Question/Answer

Who can be saved?
♦
Possible only with God

PETER
(What for Us?)
Lk. 18:26-30

Question/Answer

Left everything and followed You

♦
Will Receive:

- Much present age &
- Age to come, eternal life

Luke 10
Lawyer

V
A
R
I
A
N
T

Obtain Eternal Life
(Mt. 19:16)

If you wish to enter into life, keep the commandments.
(Mt. 19:17)

V
A
R
I
A
N
T

What then will there be for us?
(Mt. 19:27)

Will receive many times as much, and will inherit eternal life. (Mt. 19:29)



Content Development

CHILDREN (Kingdom) Lk. 18:15-17

- Kingdom belongs to such as these
- Kingdom to be received like a child
- Kingdom to be entered into

RICH RULER (What Do To?) Lk. 18:18-23

Inherit Eternal Life
Questions/Answers
 • Good (Character of God)
 • Law (Requirements of God)
Condition/Response
 Lack One Thing...
 [Go], sell, give;
 come, follow Me
 ♦
 Went away grieving

DISCIPLES (Who Enters?) Lk. 18:24-25

Statement
 Hard for wealthy to enter the kingdom
Question/Answer
 Who can be saved?
 ♦
 Possible only with God

PETER (What for Us?) Lk. 18:26-30

Question/Answer
 Left everything and followed You
 ♦
 Will Receive:
 • Much present age &
 • Age to come, eternal life

V
A
R
I
A
N
T

Obtain Eternal Life
 (Mt. 19:16)
If you wish to enter into life, keep the commandments.
 (Mt. 19:17)

V
A
R
I
A
N
T

What then will there be for us?
 (Mt. 19:27)
Will receive many times as much, and will inherit eternal life.
 (Mt. 19:29)



Content Development

CHILDREN (Kingdom) Lk. 18:15-17

- Kingdom belongs to such as these
- Kingdom to be received like a child
- Kingdom to be entered into

RICH RULER (What Do To?) Lk. 18:18-23

Inherit Eternal Life

Questions/Answers

- Good (Character of God)
- Law (Requirements of God)

Condition/Response

Lack One Thing..
[Go], sell, give;
come, follow Me

Went away grieving

DISCIPLES (Who Enters?) Lk. 18:24-25

Statement

Hard for wealthy to enter the kingdom

Question/Answer

Who can be saved?
Possible only with God

PETER (What for Us?) Lk. 18:26-30

Question/Answer

Left everything and followed You

Will Receive:

- Much present age &
- Age to come, eternal life

V
A
R
I
A
N
T

**Obtain Eternal Life
(Mt. 19:16)**

Statement

If you wish to enter into life, keep the commandments.
(Mt. 19:17)

V
A
R
I
A
N
T

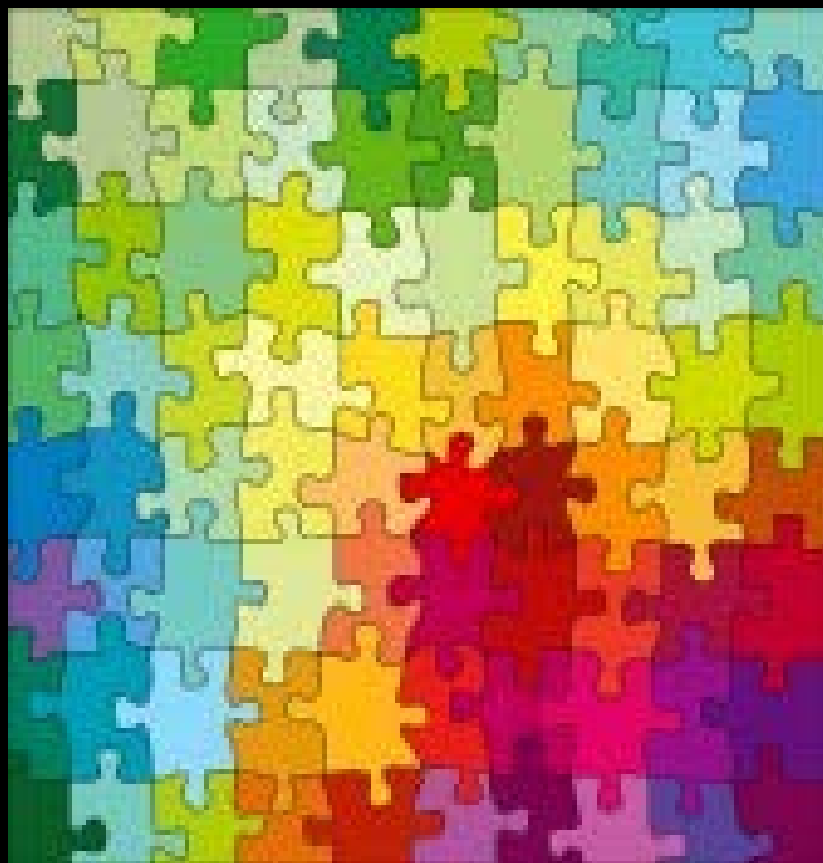
**What then will there be for us?
(Mt. 19:27)**

Statement

Will receive many times as much, and will inherit eternal life. (Mt. 19:29)



Interpretative Puzzle



RYS Major Issues

ITEM	ISSUE	OPTIONS				
1	Who Was Asking?	Unbeliever	or	Believer		
2	What Was Asked?	Works (for eternal life)	or	Works (for rewards)		
3	What Was Expected?	Entering the Kingdom	or	Inheriting Rewards		
4	Kingdom Entrance	Entering Eternal Life (salvation)	or	Inheriting the Kingdom (rewards)		
5	Spiritual Perception	Man's Goodness	or	God's Goodness		
6	Life	Eternal	or	Abundant		
7	Jesus' Instructions	One-directional (for salvation)	or	One-directional (for discipleship)	or	Two-directional (for salvation and discipleship)
8	Treasure in Heaven	Eternal Life (merit-of-life)	or	Eternal Life (proof-of-life)	or	Rewards (evidence-of-maturity)
9	Ability to Save	God (through faith)	or	Men (by works)		
10	What's in It for Me?	Heaven (eternal destiny)	or	Compensation (for obedience)		



Major Views

ITEM	REFORMED THEOLOGY
1	Unbeliever
2	Works (for eternal life)
3	Entering the Kingdom
4	Entering Eternal Life (salvation)
5	God's Goodness
6	Eternal
7	One-directional (for salvation)
8	Eternal Life (proof-of-life)
9	God (through faith)
10	Heaven (eternal destiny)



Major Views

ITEM	FREE GRACE THEOLOGY "A"	REFORMED THEOLOGY
1	Believer	Unbeliever
2	Works (for rewards)	Works (for eternal life)
3	Inheriting Rewards	Entering the Kingdom
4	Inheriting the Kingdom (rewards)	Entering Eternal Life (salvation)
5	God's Goodness	God's Goodness
6	Abundant	Eternal
7	One-directional (for discipleship)	One-directional (for salvation)
8	Rewards (evidence-of-maturity)	Eternal Life (proof-of-life)
9	Men (by works)	God (through faith)
10	Compensation (for obedience)	Heaven (eternal destiny)



Major Views

ITEM	FREE GRACE THEOLOGY "A"	REFORMED THEOLOGY	FREE GRACE THEOLOGY "B"
1	Believer	Unbeliever	Unbeliever
2	Works (for rewards)	Works (for eternal life)	Works (for rewards)
3	Inheriting Rewards	Entering the Kingdom	Entering the Kingdom
4	Inheriting the Kingdom (rewards)	Entering Eternal Life (salvation)	Entering Eternal Life (salvation)
5	God's Goodness	God's Goodness	God's Goodness
6	Abundant	Eternal	Eternal & Abundant
7	One-directional (for discipleship)	One-directional (for salvation)	Two-directional (for salvation and discipleship)
8	Rewards (evidence-of-maturity)	Eternal Life (proof-of-life)	Rewards (evidence-of-maturity)
9	Men (by works)	God (through faith)	God (through faith)
10	Compensation (for obedience)	Heaven (eternal destiny)	Compensation (for obedience)

Critical Issues

- 1. Who was asking?*
- 2. What was expected?*
- 3. Jesus' Instructions*



Who Was Asking?



900lb Gorilla

Who Was Asking?

	Luke 10	Luke 18
Inquirer	Lawyer	Rich Ruler
Question	<i>What must I do to inherit eternal life?</i>	<i>What must I do to inherit eternal life?</i>
Answer	<i>Do this [keep the commandments] and you will live.</i>	<i>If you wish to enter into life, keep the commandments.</i>
Response	[Jesus withdrew.]	Went away grieving.



Who Was Asking?

Many even of the rulers believed in Him, but because of the Pharisees they were not confessing Him, **for fear that they would be put out of the synagogue.**

(John 12:42)

At preparation for Jesus' burial (John 19:38-39):

Joseph of Arimathea, being a disciple of Jesus, but a secret one **for fear of the Jews**, asked Pilate that he might take away the body of Jesus; and Pilate granted permission. So he came and took away His body (v. 38)

and

Nicodemus, who had first **come to Him by night**, also came, bringing a mixture of myrrh and aloes, about a hundred pounds weight. (v. 39)

Perspective from John

Who Was Asking?

CHAPTER	LEADERS OPPOSE	TRIED TO TRAP	LEADERS CONFRONTED	LEADERS THOUGHTS	TOTAL
5	21,30			22	3
6	2				1
6	7,11			8	3
10		25			1
11	16				1
11	45	53-54	43,46,52		5
12			1		1
14	1		3		2
15	2				1
16	14			15	2
19	7				1
19		39			1
19	47				1
20	1,19,26	20,21-22,26	46	23	8
22	2				1
23	10				1
16	17	6	6	4	33

Perspective from Luke



What Was Expected?

Promise of Future Kingdom

I will establish his kingdom...I will establish the throne of his **kingdom forever**....Your house and your kingdom shall endure before Me **forever**; your throne shall be established **forever** (2 Sam. 7:12-13, 16)

In the days of those kings the God of heaven will set up a kingdom which will never be destroyed, and that kingdom will not be left for another people; it will crush and put an end to all these kingdoms, but it will itself **endure forever** (Dan. 2:44)

Then the sovereignty, the dominion and the greatness of all the kingdoms under the whole heaven will be given to the people of the saints of the Highest One; His kingdom will be an **everlasting kingdom** (Dan. 7:27)

Perspective from Old Testament



What Was Expected?

Promise of Future National Deliverance

And it will be said in that day, “Behold, this is our God for whom we have waited that He might **save** [delivered from national judgment] us. This is the Lord for whom we have waited; Let us rejoice and be glad in His **salvation** [delivered from national judgment]” (Isa. 25:9)

Israel has been **saved** [delivered from national judgment] by the Lord with an **everlasting salvation** (Isa. 45:17)

Perspective from Old Testament



What Was Expected?

Angel's announcement to Mary:

He will be great and will be called the Son of the Most High; and the Lord God will give Him the throne of His father David; and He will reign over the house of Jacob forever, and His **kingdom will have no end.**

(Luke 1:32-33)

Zacharias proclaims:

[He] has raised up a horn of salvation for us. In the house of David His servant — As He spoke by the mouth of His holy prophets from of old — **Salvation FROM OUR ENEMIES**, And FROM THE HAND OF ALL WHO HATE US

(Luke 1:69-71)

John the Forerunner announces:

Repent, for the **kingdom** of heaven is at hand (Matt. 3:2)

Perspective during Life of Christ



What Was Expected?

Jesus the Messiah declares:

Repent, for the kingdom of heaven is at hand (Matt. 4:17)

Jesus sends out the Twelve within 1 year of His death:

And as you go, preach, saying, “The kingdom of heaven is at hand” (Matt. 10:7)

Disciples anticipating Kingdom late in Christ’s ministry:

While they were listening to these things, Jesus went on to tell a parable, because He was near Jerusalem, and they supposed that the kingdom of God was going to appear immediately (Luke 19:11)

Disciples anticipating Kingdom following Christ’s death:

So when they had come together, they were asking Him, saying, “Lord, is it at this time You are restoring the kingdom to Israel?” (Acts 1:6)

Perspective during Life of Christ



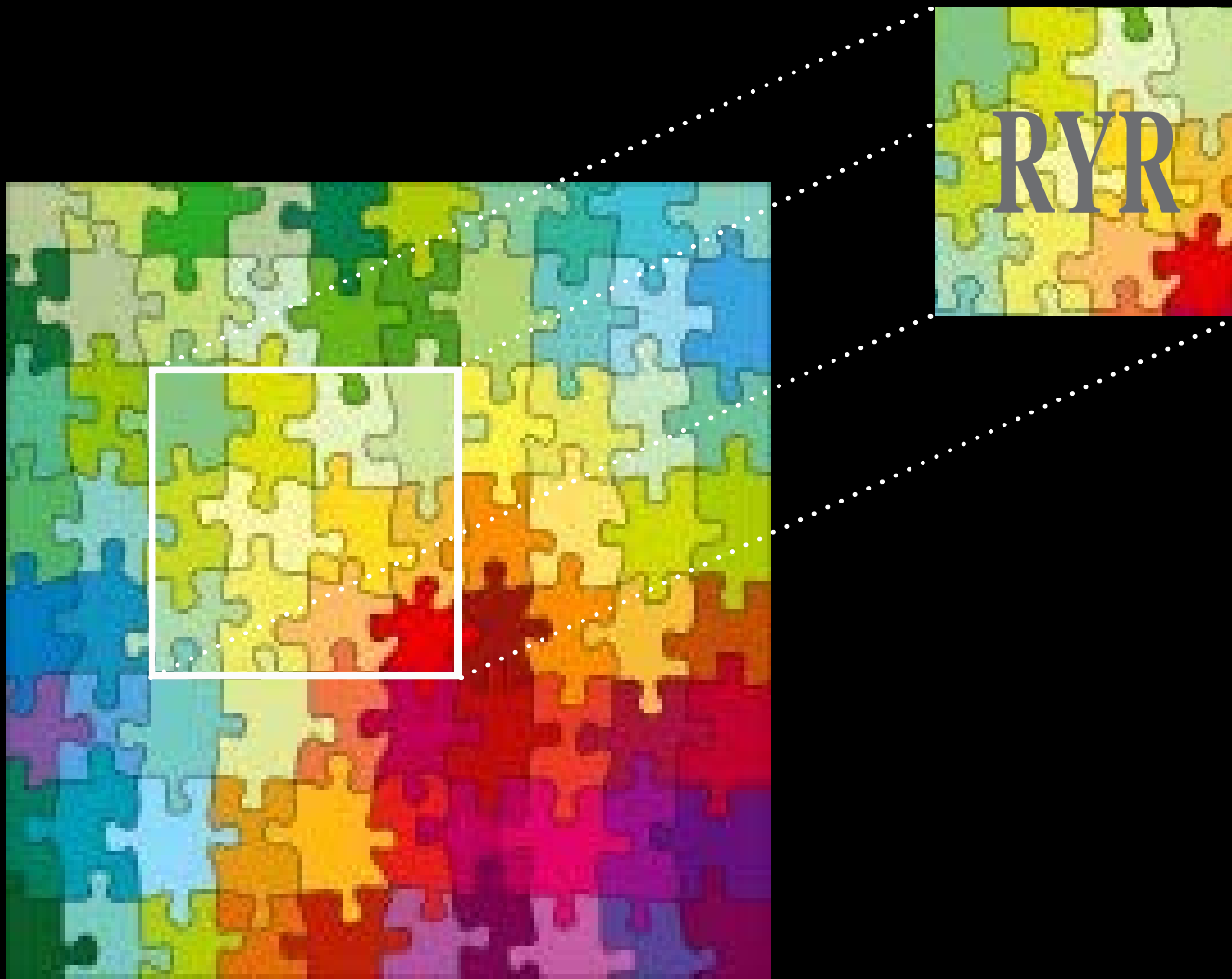
What Was Expected?

*The **national expectation** was for only one coming of the Messiah and when He arrived He **first** would deliver the nation from Roman oppression and **then** immediately setup the promised earthly kingdom from which He would reign forever.*

Dr. Kenneth Barker
Old Testament Scholar



Puzzle within a Puzzle

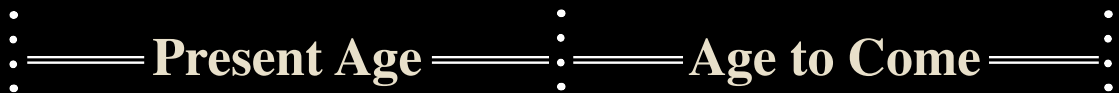


Entrance Based on Believing

Unless one is **born again** he cannot see the kingdom of God... unless one is born of water and the Spirit he cannot **enter into the kingdom** of God (Jn. 3:3, 5)



For God so loved the world, that He gave His only begotten Son, that whoever **believes in Him** shall not perish, but **have eternal life** (Jn. 3:16)



Perspective of Future Things



Entrance Based on Believing

Timeline



Eternal Life



*“If...Observes [Ordinances],
He Will Live”
(Lev. 18:5; Ezek. 20:11)*

*“Take Hold
of Eternal Life”
(1 Tim. 6:12)*

*“Inherit Eternal Life”
(Matt. 19:29)*

Kingdom



*“Inherit the Kingdom”
(Matt. 25:34; Rev. 21:7)*

God's Timetable



Entrance Based on Righteousness

*For I say to you that unless your
righteousness surpasses that of
the scribes and Pharisees, you will
not **enter the kingdom** of heaven.*

Matt. 5:20



Entrance Based on Righteousness

For I say to you that unless your **righteousness** surpasses that of the scribes and Pharisees, you will not **enter the kingdom** of heaven (Matt. 5:20)

Option "A"

RIGHTEOUSNESS

CONDITION

RESULT

Practical

Works

Discipleship

Entering the Kingdom = Inheriting Eternal Life



Entrance Based on Righteousness

For I say to you that unless your **righteousness** surpasses that of the scribes and Pharisees, you will not **enter the kingdom** of heaven (Matt. 5:20)

Option “A”

RIGHTEOUSNESS

Practical

CONDITION

Works

RESULT

Discipleship

Entering the Kingdom = Inheriting Eternal Life

Option “B”

RIGHTEOUSNESS

Positional

CONDITION

Faith

RESULT

Relationship

Entering the Kingdom = Entering Eternal Life

Entrance Based on Works

*3 Truly I say to you, unless you are converted [change] and **become like children**, you will not **enter the kingdom of heaven**.*

*4 Whoever then **humbles himself as this child**, he is the **greatest in the kingdom of heaven**.*

Matt. 18:3-4



Entrance Based on Works

Truly I say to you, unless you are converted [change] and **become like children**, you will not **enter the kingdom** of heaven. Whoever then **humbles himself as this child**, he is the **greatest in the kingdom** of heaven (*Matt. 18:3-4*)

Option “A”

V. 3 to V. 4

CONDITION

RESULT

Repetition

Humble Service

Enter/Great in Kingdom

Entering the Kingdom = Inheriting Eternal Life



Entrance Based on Works

Truly I say to you, unless you are converted [change] and **become like children**, you will not **enter the kingdom** of heaven. Whoever then **humbles himself as this child**, he is the **greatest in the kingdom** of heaven (*Matt. 18:3-4*)

Option “A”

V. 3 to V. 4

CONDITION

RESULT

Repetition

Humble Service

Enter/Great in Kingdom

Entering the Kingdom = Inheriting Eternal Life

Option “B”

V. 3 to V. 4

CONDITION

RESULT

Progression

Childlike Trust

Being in the Kingdom

Humble Service

Being Great in Kingdom

Entering the Kingdom = Entering Eternal Life



Jesus' Instructions

Instructions:

Go ... Sell ... Give; Come ... Follow Me

Interpretations:

To Unbeliever

Relationship

"Follow Me" = Eternal Life by Faith-Works

Jesus' Instructions

Instructions:

Go ... Sell ... Give; Come ... Follow Me

Interpretations:

To Unbeliever

Relationship

“Follow Me” = Eternal Life by Faith-Works

To Believer

Discipleship

“Follow Me” = Maturity by Works

Jesus' Instructions

Instructions:

Go ... Sell ... Give; Come ... Follow Me

Interpretations:

To Unbeliever

Relationship

“Follow Me” = Eternal Life by Faith-Works

To Believer

Discipleship

“Follow Me” = Maturity by Works

To Unbeliever

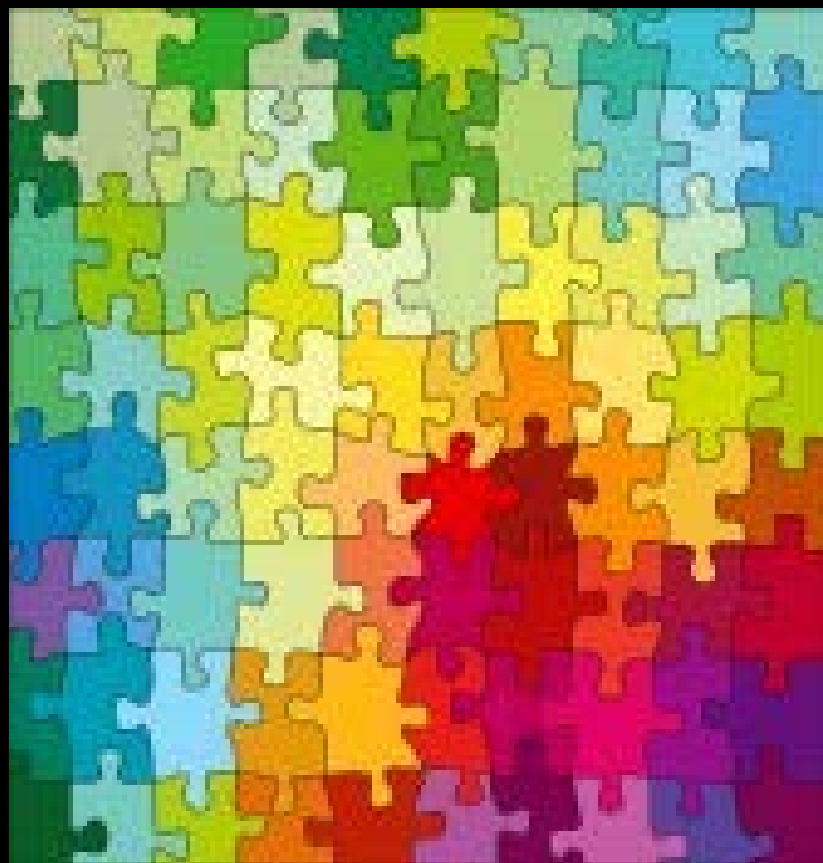
Relationship

*“Go, Sell, Give” =
Eternal Life by Faith*

Discipleship

*“Come, Follow Me” =
Maturity by Works*

Interpretative Puzzle



Jesus' Answer on Target

CHILDREN
(Kingdom)
Lk. 18:15-17

- Kingdom belongs to such as these
- Kingdom to be received like a Child
- Kingdom to be entered into

RICH RULER
(What Do To?)
Lk. 18:18-23

Inherit Eternal Life

Questions/Answers

- Good (Character of God)
- Law (Requirements of God)

Condition/Response

Lack One Thing...
[Go], sell, give;
come, follow Me
♦
Went away grieving

DISCIPLES
(Who Enters?)
Lk. 18:24-25

Statement

Hard for wealthy to enter the kingdom

Question/Answer

Who can be saved?
♦
Possible only with God

PETER
(What for Us?)
Lk. 18:26-30

Question/Answer

Left everything and followed You
♦
Will Receive:
• Much present age &
• Age to come, eternal life

V
A
R
I
A
N
T

Obtain Eternal Life
(Mt. 19:16)

If you wish to enter into life, keep the commandments.
(Mt. 19:17)

V
A
R
I
A
N
T

What then will there be for us?
(Mt. 19:27)

Will receive many times as much, and will inherit eternal life. (Mt. 19:29)



Apples and Oranges



≠



Proper Perspective

*Entering the Kingdom
is synonymous to
Entering Eternal life*

*Entering into Life
differs from
Entering the Kingdom*

*Being in the Kingdom
differs from
Being Great in the Kingdom*

